

DC doesn't only stand for dirtcheap!

D for Drive

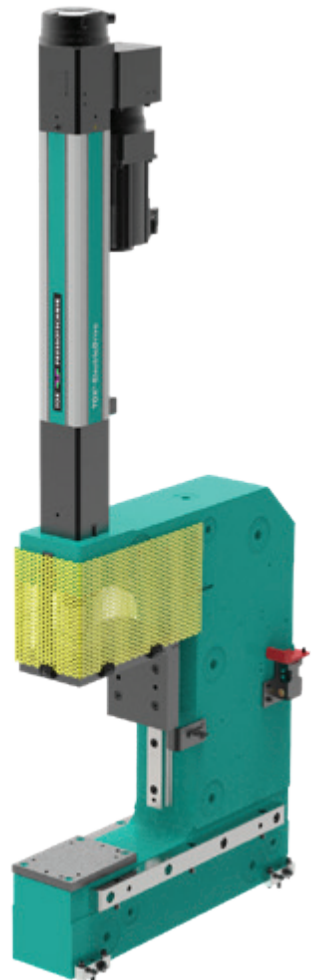
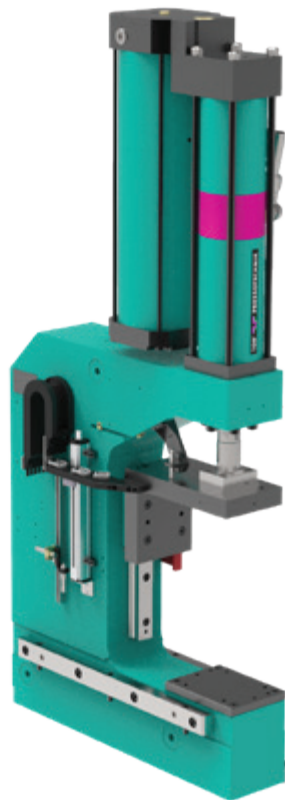
Our drives: the electromechanical TOX®-ElectricDrive, the pneumohydraulic TOX®-Powerpackage and the TOX®-Hydraulic Cylinder HZL / HZO: all in a class of their own!

C for C-Frame

Our frames: extremely rigid C-Frames suitable to use the drives in hand operated and automatic machines!

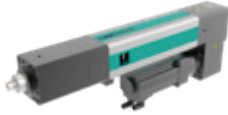
Perfect Team!

Spare resources and get a perfectly matched and assembled unit ready for installation. Choose you application, press force (max. 320 kN) and accessories and we will make you an offer.



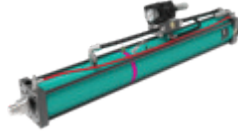
Drive + C-Frame (Sets up to 320 kN)

TOX®-Drives



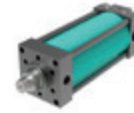
TOX®-ElectricDrive

- Electromechanical servo drives with press forces up to 1000 kN
- Energy saving and high precision
- Total strokes up to 450 mm



TOX®-Powerpackage

- Pneumohydraulic drives with press forces from 2 to 2000 kN
- Power strokes up to 69 mm
- Total strokes up to 400 mm

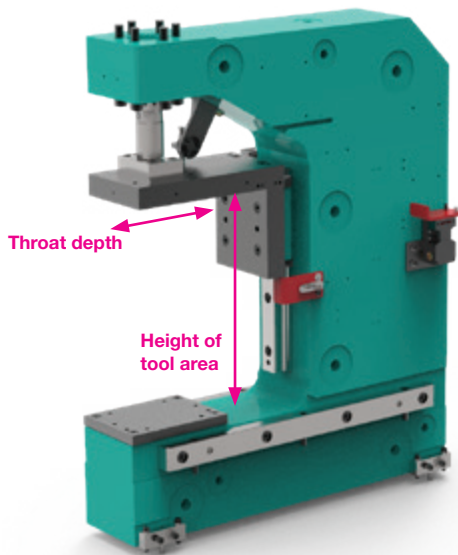


TOX®-Hydraulic Cylinder HZL/HZO

- Single acting cylinder with press forces up to 770 kN
- Total strokes up to 200 mm
- Mostly used with X-KT-Systems

Multifunctional C-Frame CMB

NEW!



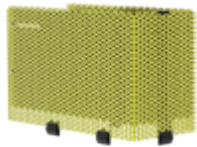
Ready to use designed for you:

- Ideal for clinching, pressing and punching applications (Punching force: 50% of the max. press force of the C-frame)
- Modular accessories mountable on both sides and retrofittable
- Fast delivery and ready for assembly
- Fits for all drives **TOX®-ElectricDrive, TOX®-Powerpackage and TOX®-Hydraulic Cylinder** up to 320 kN
- Available in 3 different versions:

C-Frame Type	Press force	Height of tool area	Throat depth	Maximum Stroke
CMB 010 - 050	10 kN - 52 kN	430 mm	200 mm	200 mm
CMB 050 - 160	48 kN - 158 kN			
CMB 100 - 320	100 kN - 320 kN			

Accessories

Ready to do the work



Return Stroke Protection ZRS protects the operator of hand operated machines



Adjustment Blocks ZAE for adjusting the frame on a base frame



Side Rails ZTL to insert the frame into a base frame



Tooling Plate ZWT for easy adjustment and pinning of own tools



External Position Transducer ZHW and Sensor flag ZSF for measuring the current ram and tool position



Restraint Device ZHE for supporting the ram during maintenance and tool change



BDC-Sensor ZUT, X-dimension switch ZWE, Locking mode sensor ZSH and Sensor flag ZSF for detection of the ram in important process positions



TDC-Sensor ZOT with Energy chain ZEK and Sensor flag ZSF for detection of the ram in basic position, without pinch edge in the return stroke



Force sensor ZPS with Energy chain ZEK and Sensor flag ZSF to provide press force data to a process monitoring

Accessories

Allocation Chart

Drives	Type	C-Frame Type	Accessories	Tooling Plate ZWT	Return Stroke Protection ZRS
TOX®-ElectricDrive	EQ-K 005, EQ-K 010, EQ-K 030	CMB 010 - 050 (max. 52 kN)		ZWT 004.000.00	ZRS 004.000.00
	EX-K 010, EX-K 030, EX-K 060				
	EX-F 005, EX-F 010, EX-F 030				
TOX®-Powerpackage	Q-S/K 001, Q-S/K 002, Q-S/K 004				
	X-S/K 001, X-S/K 002, X-S/K 004				
	X-AT 002, X-AT 004				
TOX®-Hydraulic Cylinder	HZL 02, HZL 05				
	HZO 02, HZO 05				
TOX®-ElectricDrive	EQ-K 030, EQ-K 060, EQ-K 100				
	EX-K 060, EX-K 100, EX-K 200				
	EX-F 030, EX-F 060, EX-F 100				
TOX®-Powerpackage	Q-S/K 004, Q-S/K 008, Q-S/K 015				
	X-S/K 004, X-S/K 008, X-S/K 015				
	X-AT 004, X-AT 008, X-AT 015				
TOX®-Hydraulic Cylinder	HZL 05, HZL 07, HZL 11				
	HZO 05, HZO 07, HZO 11				
TOX®-ElectricDrive	EQ-K 060, EQ-K 100	CMB 100 - 320 (max. 320 kN)		ZWT 030.000.00	ZRS 030.000.00
	EX-K 100, EX-K 200				
	EX-F 060, EX-F 100				
	EPMK 300				
TOX®-Powerpackage	Q-S/K 015, Q-S/K 030				
	X-S/K 015, X-S/K 030				
	X-AT 015, X-AT 030				
TOX®-Hydraulic Cylinder	HZL 11, HZL 19, HZL 29				
	HZO 11, HZO 19, HZO 29				

TOX®  **PRESSOTECHNIK**

TOX® PRESSOTECHNIK GmbH & Co. KG
 Riedstrasse 4
 88250 Weingarten / Germany

Find your local contact partner at:
tox-pressotechnik.com